

FRED GAGNER
Music Publisher
10432 East Flintlock
Tucson Arizona 85749

World-Wide
Hawaiian Steel Guitar
Music Association

A Global
Communications
Network of
Hawaiian
Music Enthusiasts

**FIRST
CLASS
MAIL**

Address Correction Requested

QUARTERLY NEWSLETTER

APRIL 1986

PUBLISHED IN JANUARY, APRIL, JULY and OCTOBER

VOLUME No. 1

ISSUE No. 2

\$3.00 U.S.

MAIL AND PAYMENTS: Please address all mail to, and make all payments to FRED GAGNER, 10432 EAST FLINTLOCK, TUCSON, AZ 85749 (USA). (Tel 602-749-4251)

THE FOUNDERS: The ASSOCIATION was organized on October 9, 1985 by Hawaiian music enthusiasts and steel guitarists Lorene Petersen and Arthur Ruyman of Vancouver, B.C., Canada and Fred Gagner of Tucson, Arizona, USA. Educational music author and publisher Fred Gagner is serving as Secretary-Treasurer-Editor and operating the Association as a Sole Proprietorship on a NON-PROFIT basis. Petersen, Ruyman and Gagner are serving as a Temporary Board of Directors until July 1, 1986.

PURPOSE AND GOALS: To develop a Global Communications Network of Players and Lovers of Hawaiian Popular Music as performed on all types of Steel Guitars: Acoustic, Electric, Pedal or Non-Pedal and related instruments. All Hawaiian Music Enthusiasts, players as well as non-players and vocalists, are welcome to join with us in the world-wide promotion of our music. We shall encourage the study, teaching and performance of the Steel Guitar. We shall promote and publicize Hawaiian music. We shall support all musical instruments associated with Hawaiian music. We welcome the advice of our members in the fulfillment of our goals.

QUARTERLY NEWSLETTERS: To be published in January, April, July and October. The FIRST ISSUE was mailed December 31, 1985. It contained 32 pages which included 8 pages of music in notes and numbers.

They will contain music in notes and tablature. They will serve as a basis for the exchange of ideas and information between members. They will provide news, technical information, instructional material etc. It is your newsletter: tell us what you want and give us your news and viewpoints. Since most of our members may not be able to attend the Conventions a quality newsletter is of prime importance to all of us. We AIR MAIL newsletters to Overseas and Canadian members; FIRST CLASS in the USA.

HAWAIIAN MUSIC IN PRINT: Columbia Pictures Publications has two collections of Hawaiian music available on special order if not in the racks at your local music shops. Remember that the stock number and full title are very important in this age of computerized inventory control in the publisher warehouses.

I LOVE HAWAIIAN MUSIC (F2221SMX) (\$7.95) is a standard piano, vocal with guitar chords sheet music collection of 28 standards including Blue Hawaii, Hawaiian War Chant, Little Grass Shack, Drinking Song of Hawaii, Sweet Someone, Pagan Love Song, A Song of Old Hawaii, etc. The book was published in 1984.

FAMOUS SONGS OF HAWAII by R. Alex Anderson (CL21025) (\$6.95) is a collection of 83 Anderson songs including his personal favorite, the HAOLE HULA on page 15. A 92 page book with melody lead lines and words with chord symbols: This is truly a Collector's item for lovers of Hawaiian popular music.

AIMS AND ASPIRATIONS: Record Producer and Steel Guitarist Tom Shilstra of Toronto, Canada shares his views about the future of Steel Guitar and Hawaiian music. (Tom is a Lap Steel player who uses the High Bass G Tuning: 1-DBGDBG-6.)

All those who love Hawaiian music and the Hawaiian steel guitar and who join one or more clubs or associations devoted to the revival of their favorite music have an important question to ask themselves: Which of the two, Hawaiian music or the steel guitar, do you love the most? On the surface, the question may seem superfluous and unnecessary: don't the two go hand in hand? No, not necessarily!

If Hawaiian Music is your great love you will expect to hear mostly Hawaiian songs and Hawaiian style steel playing. You will have little use for steel guitar albums of other types of music and resent people who specialize in Country, Bluegrass, Jazz or Pop in their steel playing. You will believe that the Hawaiian steel guitar is the heart and soul of Hawaiian music and that it's revival will result in a renewed interest in Hawaiian music. You will most likely be able to play in more than one tuning and you will have a definite opinion as to which is the best tuning: your own favorite, of course. Most of the world would agree with your thinking, but don't forget that in Hawaii they do not consider the steel guitar to be an essential ingredient of Hawaiian music.

Now, if it is the steel guitar you love the most, you will be aware of it's many qualities: versatility, individuality and superior power of expression. You will try to develop the three dimensions: straight picking, harmonics and volume control shading. The latter can be hand or pedal. You will probably be certain that a lap steel is better than a pedal steel for melody playing because greater vibrato and horizontal smoothness are better listening than the vertical expression and frequent lack of vibrato on the pedal steel. However, you will probably grant that some people, in spite of the difficulty, produce some pretty good music on the pedal steel. You will play a lot of Hawaiian melodies, but you will play a lot of other stuff too.

Supposing we all belong to group one: those who love Hawaiian Music most, what can we expect to accomplish? Well, what has been accomplished in the last 10 years? In Hawaii there are fewer professional steel guitarists than in 1975. On the mainland a good many of those who once played in the thirties and forties are taking up where they left off now that they are retired, but the number of professional groups has not increased. Sure, there are a lot of small things we can do, they all help, but generally we wait for some special happening, some catalyst, some miracle to bring back the focus on Hawaiian Music.

Supposing, now, that we all belong to group two: those who put the steel guitar first. What can we do that group one can't or doesn't do? Well, we can hone our skills in many directions. The more types of music for which steel is used, the greater is the chance that one will have an impact on public taste. The aim here must be to exploit all the qualities of the instrument. This would include first string skills which have been downgraded since the electric steel spawned the multiplicity of tunings. Doublets, triplets, quintuplets and fast runs are great not only for marches, but for jazz and polkas and even rock and roll. Who knows, it might even be rock groups who bring it back. The point is that no matter what the original attraction to play steel, all those who do so will know that Hawaiian expression is the ultimate and they will all become potential converts to Hawaiian style steel. Those who put the steel guitar first want it to happen just as much as those who put Hawaiian music first, but they don't care HOW it happens. (The comments and viewpoints of readers are encouraged for our July Newsletter, Editor.)

MEMBERSHIP DUES: \$5.00 U.S. pays your Dues until JUNE 30, 1986 and for the JANUARY and APRIL 1986 NEWSLETTERS. RENEWAL DUES for the membership year July 1, 1986 thru June 30, 1987 are \$12.00 U.S. and pays for your JULY and OCTOBER 1986 and JANUARY and APRIL 1987 NEWSLETTERS. A Renewal Membership Form is enclosed.

STEEL GUITAR CARTOON:

Professional Cartoonist and Association Member, FRED BARNETT of Honolulu, has authorized our publication of this unique musical cartoon. It will also be published in the Souvenir Program of Jerry Byrd's 1986 Annual Steel Guitar Celebration Concert scheduled for May 4, 1986 in Honolulu. Thanks Fred! We will be looking forward to seeing your next inspiration.



STEEL GUITAR CONNECTION: A new music store located at 1609 North Stone Ave., Tucson, Arizona 85705 (Tel. 602-326-9124). Owned and operated by member Leland Rimke, a fine pedal steel player; Good Luck in your new venture!

THE KEY TO ACHIEVEMENT: Donald G. Savage, Los Angeles Times News Service, summarizes the findings of Education Professor Benjamin Bloom, University of Chicago that DRIVE and DETERMINATION, not any great natural talent, leads to EXTRAORDINARY SUCCESS.

Professor Bloom conducted a five year study of 120 top performers in six fields: concert pianists, Olympic swimmers, sculptors, tennis players, mathematicians and research neurologists. Family support and encouragement along with role model dedication to the work ethic were of great significance. Exposure of children at early ages to music, sports and learning began their pattern of achievement. So HARD WORK not GENIUS is the secret. PRACTICE, PRACTICE and MORE PRACTICE!

FOR DOBRO PICKERS: "Country Heritage" is a monthly newsletter for resonator guitar players. Provides information on books, records and cassettes, guitars, repair parts etc. Write to the publisher, a professional Dobro player: BEVERLY KING, RR #1, Box #320, MADILL, OKLAHOMA 73446.

Chuck Mills, PO Box #72, Buckhannon, West Virginia 26201, has recently published a Book and Cassette "Complete Course - Teaching Manual for Dobro Guitar." Write to him for details.

HAWAIIAN NOSTALGIA: Remember the 5 Minute Hawaiian Guitar Self-Instructor booklets? I came across about 50 of them in a local music store recently. The shop has an odds and ends counter where I have picked up some collector's items. This one was published back in 1926 by M. M. Cole in Chicago, 16 pages, 50 cents, Low Bass A Major tuning, number arrangements of Aloha Oe, One-Two-Three-Four, Home Sweet Home, etc. Wm. J. Smith in New York also published them.

HAWAIIAN TRAVEL GAME: Rainbow Games, PO Box 2001, Beaverton, Oregon 97075 offers "The Hawaii Game - Holoholo Hawaii." For 2 to 4 players, age 8 to adult, a tour of the Hawaiian Islands gathering information and points as you holoholo (visit) via the game. \$22.00 postpaid within the U. S. postal system. For other countries write for price quotation. (Thanks to member Sue Underwood for this one.)

CUSTOM STEEL BARS: Member Edward R. Watson (aka "The Pineapple Kicker")
1608 Virginia Lane, Grants Pass, Oregon 97526, (Tel. 503-479-0039)
manufactures straight and tapered stainless steel bars. Write or phone
for details.

THE KAMOKU FAMILY: Lorene and Art and several friends are raising funds
to try to bring to Vancouver a Hawaiian musical family from the Big
Island of Hawaii. For details please write or phone: Lorene Petersen,
2090 West 44th Ave., Vancouver, B.C., Canada V6M 2E9 (Tel. 604-263-8944).
They would visit for one week in August during the EXPO 86 World's Fair
in Vancouver.

INDO RECORDING STUDIO: Operated by Ed and Nobuko Mayer, PO Box 6292,
Honolulu, HI 96818 (Tel. 808-672-3917 or 449-9476). Ed's steel playing
dates back to 1945 in Indonesia and the 1950 period in the Netherlands
as the rhythm guitarist for Rudi Wairata. He has the largest collection
of vintage steel guitars in Hawaii. He is recorded on MAPLE MA-1016,
"New Hawaiian Minstrels". Members are encouraged to contact Ed for their
recording needs. (To be continued in July Newsletter, Editor.)

HINES STEEL GUITAR RECORD: From the record jacket circa 1965; "GEORGE
'HULA' HINES: One of the foremost exponents of the steel guitar, who
has been featured vocally and instrumentally with Sammy Kaye, Guy
Lombardo, Enoch Light and was the original steel guitarist for Haleloke
on the Arthur Godfrey TV and radio shows. He and his orchestra have
had long and very successful engagements at the Hawaiian Room, Hotel
Lexington in New York City, the Polynesian Gardens of the Roney Plaza
Hotel in Miami Beach and is currently in his Fourth Year at the
Polynesian Room of the Yankee Clipper Hotel in Fort Lauderdale, Florida."
The price of the LP is \$8.00 postpaid within USA, \$10.00 U.S. outside of
USA. Send to: LARONBOB RECORDS, 1113 N.E. 98th St., Miami Shores, FL
33138. (Thanks to Dwight Harris for this one.)

FRANK BAUM CASSETTE: West German member Frank Baum is a pedal steel
guitarist who operates COUNTRY GREEN a group specializing in modern
country music, country rock and western swing. When he wears his other
hat he is FRANK BAUM and his MAUNA LOA HAWAIIANS. His TOPSOUND CASSETTE
TOP-2005, ALOHA OE - SWINGING HAWAII, with eleven songs including
Maui Girl, Kaiulani, Kualoa Waltz, Goro Goro Ne, etc. Send \$7.00 U.S.
for Air Mail shipment to: Frank Baum, Koestl 12, 8451 Hohenburg, West
Germany.

SUCCESSOR TO OAHU PUBLISHING: The Oahu company, formerly located in Sun City, Arizona near Phoenix has been taken over by THE ALOHA PUBLISHING CO., PO BOX 20374, DALLAS, TEXAS 75220-0374. Telephone: (214) 357-7834. WRITE FOR THEIR CATALOG.

Founded by Harry G. Stanley in 1926 and originally located in Cleveland, Ohio; OAHU was the largest publisher of steel guitar lesson music in various tunings, notes and numbers, and popular song arrangements. They also had a fine standard guitar course. Their sheet music style lessons were the mainstay of thousands of guitar teachers in Canada and the U.S.A. Many of our members started out with their lesson music.

ALOHA owner-operator MILTON HEINSOHN is a long-time studio operator and is now a prime source of accessories and lesson music in the A and E six string tunings. He has the BERNIE KAAI FOLIO of 8 solos in 8 different tunings for six string steel in notes and numbers, a super book! He has Gospel music in A and E7th and many other sheet music steel arrangements. Imported six string electric steel guitars are available.

Milton has published a write-up on our Association in his Spring Mail Order Bulletin. This will inform hundreds of players who otherwise would never learn of our existence. Write for the ALOHA Catalog and enjoy a pleasant surprise.

FINANCIAL ACCOUNTING TO MEMBERS: From October 9, 1985 (Organization Day) thru December 31, 1985 the ASSOCIATION received INCOME of \$1109.89 in DUES and DONATIONS. \$976.63 was paid out for OPERATING EXPENSES in the form of Postage, Printing and Typographic Services and a small amount for office supplies. The remaining amount of \$133.26 was carried over for application to our 1986 operating costs. Our first Newsletter (January 1986) was mailed in late December 1985 and paid for out of 1985 income as were promotional mailings to several mailing lists. Continuing membership growth will pay for our second newsletter to be mailed in mid-April 1986.

As of March 24, 1986 we had 291 members of whom 34 are Canadians, 22 Californians, 23 Hawaiians, 16 Floridians etc. In 13 Overseas countries we have 42 members of whom 12 are Australians, 9 are Japanese, 9 live in Great Britain, etc.

While we are a labor donated, non-profit organization it was necessary for your Secretary-Treasurer-Editor to pay, on a personal basis, the federal and state income taxes on the \$133.26 in 1985 income carried over to 1986. Not a large problem but it keeps us legal and law-abiding.

BACKTALK - NEWS AND VIEWS: Howard DeHeer, 6110 East Fifth St., La Quinta No. 205, Tucson, AZ 85711 wants to contact members interested in GOSPEL MUSIC.

Thanks to Vic and Nancy Rittenband for their kind words about the first newsletter. Phone calls and letters from other members were also very encouraging so Thanks to all of you out there.

Can anyone help Ed Prouty, 4261 Castlewood, Rocklin, CA 95677 with this one? He wants to know the names of steel players and tunings used on: MCA-238, Ed Kamanaloha Kenney (songs Akaka Falls and White Ginger Blossoms); Pua Almeida on his LP-316, On The Beach at Waikiki.

Bill Collett, Clarksburg, West Virginia, has found that lowering the "A" tuning down two frets to "G" provides more notes in the lower register which he feels is a practical advantage. (The number of our members who use the "G" tuning certainly supports Bill's viewpoint, Editor.)

On our name: How would WORLDWIDE HAWAIIAN MUSIC ASSOCIATION (WHMA) strike you? We decided on WHSCMA in great haste and are repenting at leisure. I must concede (with reluctance) that Lorene thought it was too long from the beginning.

Ray Harrett, 9661-132nd St., Surrey, B.C., V3T-3S5, Canada is interested in exchanging cassette tapes.

Ray J. Smith, PO Box No. 11, Salmon Arm, B.C., VOE-2T0, Canada is looking for sheet music of Sol Hoopi and Dick McIntyre; and most types of songs from twenties thru the fifties, pop, swing, jazz, bluegrass, country, rock etc. (THE PUMPKIN PATCH, Box 256, MT. GILEAD, OHIO 43338 buys and sells sheet music from 1850 to 1950. \$1.50 U.S. for their listing.)

WHERE THEY ARE PLAYING: Barney Prendergast in Surrey, England has his own group HAWAIIAN HOSPITALITY which is performing in London area and southern counties. Gigs include New Years Eve at London Hilton and other hotels. They work with a dance troupe and can do a complete Hawaiian show.

George Keoki Wiebenger, Maple Ridge, B.C., Canada has a six piece Hawaiian Band. Originally from Liverpool, England where he had a Hawaiian group for ten years. Recorded an LP for Decca in 1967 before moving to Canada. In November 1985 they made a Cable TV Christmas Special featuring Hawaiian and traditional music.

Makuakane W. W. (Billy) Reid, Halifax, Nova Scotia, recognized as the Dean of Hawaiian Music in Canada, is active with his Hawaiian Troupe and also teaches Steel Guitar.

George Keoki Lake has a Hawaiian Group active in the Edmonton, Alberta, Canada area. He is recorded on MAPLE MA-1015, KEOKI-MUSIC FOR YOUR LUAU. He has played with groups in Hawaii and provides the authentic sounds of the Islands.

Ed and Mary Maunakea of Killeen, Texas operate the KAMAAINA HAWAIIAN HULA TROUPE in the Central Texas Area.

William H. Smith, Jr. of Daphne, Alabama and the SUNSET ISLANDERS provide Luau's and music for all occasions in the Gulf Coast Area.

Joseph Sonny Nicholas, Lahaina, Hawaii has just returned from a six month playing engagement in the Far East including Japan, Hongkong, Singapore and Korea.

The TAU MOE Family have returned to Hawaii after 54 years of entertaining in Europe. Now playing at the Polynesian Cultural Center in Honolulu. Many TV, Film, Radio and Recording credits.

John H. DeBoe and his Hawaiians are performing in the Pinellas Park, Florida area.

Howard 'Ray' Knapp is playing on the tourist cruise ships in Hawaii.

A longtime Hawaiian entertainment tradition in Honolulu on Sundays at 8:00 PM for the past 18 years: Under The Ukulele Tree with Vic and Nancy Rittenband at the Reef Hotel. Write to Kokua Records, PO Box 8100, Honolulu, HI 96815 (Tel. 808-923-1644) for their catalog of cassettes, records and songs.

Continued on Page 11

Elmer Ridenhour of Roanoke, Virginia is a retired studio-store operator and music teacher whose prize pupil on Steel was Wayne Newton now a Las Vegas show biz star. He plays a twin-neck 8 string Fender Stringmaster with A6 and E7/8 (with variations) tunings. He has access to authentic Hula dancers from Virginia Beach and is averaging two or more shows monthly. Back in October 1985 they played for 600 ladies at a Beta Alpha Phi Sorority gathering and received a standing ovation. Elmer calls his group HAWAIIAN ROMANCE and features both the early and later Hawaiian pop music. He expects to be in St. Louis to play at Scotty's SGI gathering and probably for us too.

Al Pacheco, Dickinson, Texas is organizing a new group, The Hilo Hawaiians. Good Luck with your venture!

The Kona Serenaders with Lorene Petersen on Double Eight Sho-Bud (non-pedal) (E13th and C6-J. Byrd version) and Art Ruymar on standard guitar, are playing Friday and Saturday nights at the Tahiti Hut in Vancouver, B.C., Canada.

(Continued in Next Issue)

FRETTED INSTRUMENT GUILD: Our press release was published in the Jan-Feb 1986 issue of FIGA News. Your Editor is a Past President of FIGA and furnishes them with music to print in their journal. It is a 48 page magazine issued six times a year. It is primarily a Banjo club with some guitar and mandolin pickers. Dues in U.S. funds are \$12.50 in USA; \$15.00 in Canada and \$20.00 overseas. Ann Pertoney (Secy-Treas.), 2344 S. Oakley Ave., Chicago, IL 60608.

STEEL GUITAR INTERNATIONAL: The January 1986 SGI Newsletter contains a full page article encouraging Hawaiian oriented SGI members to join and support WWSGMA. We appreciate more than words can say this strong support by Scotty. Membership dues in SGI are \$20.00 per year. STEEL GUITAR INTERNATIONAL, PO Box 2413, St. Louis, MO 63114. SGI is for all steel pickers both pedal and non-pedal. Jerry Byrd is an honorary member of the Steel Guitar Hall of Fame.

SCOTTY'S MUSIC STORE: Located at 9535 Midland in St. Louis, Missouri 63114. A prime mail order source of steel supplies of all types: Write for Catalog.

TUNINGS USED BY MEMBERS: Like politics, the subject of tunings is controversial so please bear with me. While any tuning can be adapted to pedal steel this article is directed to tunings for non-pedal 6, 7 and 8 string guitars. Members have advised that they use or are interested in these tunings.

1-E B G# E D B -6	E7 (Gibson System)
1-E C# G# E B E -6	C# Minor 7th
1-E C# A E C# A -6	A High Bass
1-E C# A E C# G -6 (High)	A7th
1-D B G D B G -6	High Bass G
1-E C A G E C A G -8	C6 (Standard)
1-E C A G E C# C A -8	C6 (J. Byrd)
1-E C A G E C Bb G -8	C6 add 7
1-E C# B G# E D B E -8	E13th
1-E C A F# D C A F#-8	D9th
1-E C# A F# D# B A F#-8	B11th
1-E C# A F# E C# A F#-8	A6th

The first or highest sounding 5 or 6 strings are used the most when playing in any tuning. The High Bass G Major Dobro Tuning is tuned **TWO FRETS LOWER** than the High Bass A Major Tuning.

A Tuning: 1-EC#AEC#A-6
 G Tuning: 1-DB GDB G-6

So the G and A Number arrangements are interchangeable. To match up with the notes the A Tuning player would have to play the numbers **TWO FRETS LOWER**.

Another common practice by E Seventh players was to raise the B or second string two frets up to C# which technically gave them a C SHARP MINOR NINTH TUNING (C#EG#BD are the chord notes).

E Seventh: 1-EB G#EDB-6 (Continued in Next Issue)
 C# Minor 9th: 1-EC#G#EDB-6

COMING - COMING IN OUR JULY NEWSLETTER:

Six Song Arrangements - Six Songs in various tunings.
 Member Photos and Early Hawaiian Player Photos.



LORENE PETERSEN ON STEEL
ART RUYMAR ON STANDARD GUITAR
KONA SERENADERS, TAHITI HUT
VANCOUVER, B.C., CANADA

ELECTION BALLOTS: All members including Honoraries, can vote and are encouraged to do so. BALLOTS are ENCLOSED and contain complete instructions. To be counted, Ballots must reach us by June 2, 1986.



MAKUAKANE W.W. (BILLY) REID
HALIFAX, N.S., CANADA
CANADA'S DEAN OF HAWAIIAN MUSIC
OAHU IOLANI DOUBLE SIX STRING

CALIFORNIA HAWAIIAN NEWS: A monthly newsletter, subscription rate is \$8.00 for 12 issues. Write: California Hawaiian News, 4666 Margery Drive, Fremont, CA 94538 (Tel. (415) 490-0954). They plan to publish information on our Association.

UKULELE MUSIC: Published in 1982, Mel Bay's Hawaiian UKE SONGBOOK by Ken Eidson and Ross Cherednik, 108 pages, spiral bound, MB No. 93776, \$6.95 U.S. Written in Notes and Tablature, C Tuning (1-A, E, C, G-4), this text is designed for learning solo style playing. It contains the music for many of the old Hawaiian favorites.

1-DBGDBG-6(G)

1-EC#AEC#A-6(A)

C (P.H.15) C7 F F° F C° C

①
② 3 3-15
③ 3 3-15
④ 3 3-15
⑤ 15
⑥ 15

C G7 G° G7 C Ab7 G7 C

①
② 10 10 10
③ 10 10 10
④ 10 10 10
⑤ 10 10
⑥ 4 5 2 3 11 10 15 15 15

①
②
③
④
⑤
⑥

Memories of Old Hawaii

Slow Four

Handwritten musical notation for the first system of "Memories of Old Hawaii". It features a treble clef, a key signature of one flat (B-flat), and a 4/4 time signature. The tempo is marked "Slow Four". The notation includes a melodic line on a single staff and a guitar accompaniment below it. The guitar part is written in a simplified style using numbers 1-3 on the strings. Chords are indicated above the staff: F(*), F°, F, F°, F, and C7. A first ending bracket is shown at the end of the system.

Handwritten musical notation for the second system. It continues the melodic and guitar accompaniment. Chords include C7, F, and C7. A first ending bracket is present, with a second ending marked "2." leading to a D-flat 7 chord (D♭7). The guitar accompaniment continues with numerical notation.

Handwritten musical notation for the third system. Chords include C7, F, B♭, F, F°, B♭, F, and G7. The notation concludes with a final chord and a double bar line. The guitar accompaniment continues with numerical notation.

Handwritten musical notation for guitar, first system. Chords: G7, C7, F, F° F F° F.

Handwritten musical notation for guitar, second system. Chord: C7.

Handwritten musical notation for guitar, third system. Chords: F, Eb7, Db7, C7 (*D.C.), F, Db7, F, G.

Sunset In The Islands

Moderato

C C7 F F° F C° C G7 G° G7

① mp
②
③
④
⑤
⑥

G7 1. C (P.H.15) 2. C Ab7 C F F° F

①
②
③
④
⑤
⑥

F Fmi C G7

①
②
③
④
⑤
⑥



FRED GAGNER
TUCSON, ARIZONA

THE ASSOCIATION NAME: Several members have questioned the length of our name. So here is what happened. The decision to form the organization was made during a long distance phone call. We wished to avoid any appearance of mis-representation or confusion with any other group. Two other clubs used INTERNATIONAL so we chose WORLD-WIDE. Since our emphasis would be on the Hawaiian application of steel guitar we used HAWAIIAN STEEL GUITAR to make this point. To prevent any confusion, again we avoided CLUB and used MUSIC ASSOCIATION. Our secondary statement "A GLOBAL COMMUNICATIONS NETWORK OF HAWAIIAN MUSIC ENTHUSIASTS" further defines who we are. The name or title of a group such as ourselves should be meaningful to those who do not know who we are or what our purpose is. Those who are members already know. Any changes will be the responsibility of those Officers and Directors elected as of July 1, 1986.



CARLOS V. MINOR, SESSER, ILLINOIS
DOUBLE EIGHT RICKENBACKER

VOICE OF HAWAII: Our WWHSGMA announcement was published in the January 1986 issue of the "Voice of Hawaii," a Hawaiian Newspaper published monthly in California. Subscription rate is \$8.00 per year. Voice of Hawaii, PO Box 26511, Los Angeles, CA 90026. (Tel. (818) 765-1982.)

ALVINO REY/TOM BRADSHAW: Honorary member Alvino Rey is retired and living in Utah but plays on cruises to Hawaii. An extensive biography is provided on Steel Guitar Record Club No. 13, "The Big Band Steel Guitar of Alvino Rey." Write to Honorary Member TOM BRADSHAW, PO Box 931, Concord, California 94522 for price quote, specify mode of shipping desired. This record contains 16 pop standards such as Tenderly, Autumn Leaves, Twelfth Street Rag, Sentimental Journey, etc., and was issued in 1977 by Tom's Pedal Steel Guitar Products.

LAMENT OF A STEEL PICKERS WIFE: My husband recently retired. He now spends his days in the living room practicing his guitar. The room is littered with records, sheet music, cassettes and whatever. He doesn't hear my requests to do some chores around the house and yard. I figured that I could learn to live with having him home for lunch every day but this is all too much. I need your advice! Anything that I can put in his coffee other than arsenic? Help!

NOT FOR EVERYONE: In keeping with our policy of reporting on everything HAWAIIAN the following is quoted. "HAWAIIAN SHAMAN TRAINING, Achieve Peace, Love, Power, Wisdom; Box 6002, Malibu, CA 90265." Now my dictionary defines Shaman as magician, medium or healer, African witch doctor, Indian medicine man, Hawaiian Kahuna, etc. Now I don't know if they can help you to cast a spell on a troublesome neighbor or provide you with material assistance if you covet your best friend's wife. In any event please do not mention my name (The Editor).

LOST IN THE MAIL: Sometimes it doesn't get from here to your place or vice versa. One member's application and check never arrived. Another member did not receive his first newsletter. Here is what happens when a new member joins: (1) the payment amount and date received is written in the upper right hand corner of the application form (if it is a letter I fill out a form for the master file); (2) the name, payment and date are posted to the monthly income record sheet; (3) the member's mailing address is posted to the mailing label worksheets for the typist to place on the master mailing label sheets; (4) then a newsletter is hand addressed and mailed. Duplicate copies of financial records and new member addresses are mailed to Lorene and Art in Vancouver, B.V., Canada. (They are trying to keep me honest.)

LOGO CONTEST: Members, their friends or relatives, are requested to submit LOGO DESIGNS for adoption by the Association Board of Directors after they assume office in July 1986. The selected design will become the property of the Association with recognition and appreciation to be accorded to the Donor in the Newsletter.

A LOGO is a drawing or symbol to present the image of an organization in advertising or on stationery etc. Designs should be BLACK on WHITE as color printing is too expensive for us. Submission deadline is September 15, 1986.

ANNUAL STEEL GUITAR CELEBRATION CONCERT IN HONOLULU: Jerry Byrd's annual concert program of steel guitarists is scheduled for Sunday afternoon May 4, 1986 at the ALAMOANA AMERICANA HOTEL, 410 Atkinson Drive, Honolulu, Hawaii 96814. (Dewitt Scott, Scotty's Music Store, St. Louis, Missouri sponsors a Travel Tour to Honolulu for this event each year, Tel. No. (314) 427-7794).

Now being organized the tentative lineup of players includes: Barney Isaacs, Billy Hew Len, Herbert Hanawahine, Alan Akaka, Casey Olsen, Freddie Tavares, Jerry Byrd; Tony Ohtsuka and Kiyoshi Kobayashi from Japan; and hopefully a young lady who is a student of Alan Akaka. The Invocation to be given by Sol K. Bright, as is customary.

STEEL GUITAR HISTORY PAMPHLET: The 8 page pamphlet, the STORY OF THE STEEL GUITAR by Donald D. Mitchell of The Kamehameha Schools, enclosed with the April 1986 Association Quarterly Newsletter, is a gift to our members from Honorary Life Member Jerry Byrd.

It was published in August 1973 by The Hawaiian Music Foundation which is now inactive. The number of players performing and teaching has increased since then as several mainland teachers and performers have relocated to the Islands. The shortage of teachers is a world-wide problem since being a good player and effective teaching do not necessarily go hand in hand. Many professionals simply will not teach. Most pedal steel teachers are Country Music oriented.

THANKS TO GUITAR PLAYER MAGAZINE: They published our Association press release on page 42 of their February 1986 issue. This will help us get the word to many who would otherwise never hear about us.

FOR HAWAIIAN TRAVELERS: HAWAII VISITORS BUREAU, 2270 Kalakaua Avenue Suite 801, Honolulu, Hawaii 96815, Tel. No. (808) 923-1811.

HAWAIIAN MUSIC AND RECORD MAIL ORDER SERVICE: Harry's Music Store 3457 Waialae Avenue, Honolulu, Hawaii 96815. Tel No. (808) 735-2866. Write for catalog.

NEW JERRY BYRD ELECTRIC STEELS: Harry's Music Store is importing custom made electric steel guitars from Japan which are designed to Jerry Byrd's specifications. For details write to address above.

MUSICAL GIFTS CATALOG: The MUSIC STAND, Norwich, Vermont 05055 has a 60 page catalog of various musical gifts available on request.

PRICE CHANGES - KING MUSIC BOOKS: The selling prices of the two Charles E. King music books listed in Newsletter No. 1, on page 29, have been increased from \$7.95 to \$9.95 each.

VINTAGE HAWAIIAN RECORDS: Hawaiian Steel Guitar Classics, Volume 2 (1927-1934), FOLKLORIC No. 9027 features Sol Hoopii, Sol K. Bright, King Nawahi, Mike Hanapi and others. The album jacket contains a unique large photo of 17 Hawaiian musicians including Sol Hoopii and the McIntire brothers from the collection of Georgia Stiffler, wife of the late Sol Hoopii.

Also available Folklyric No. 9009, Hawaiian Steel Guitar from 1920s to 1950s, various artists including Sam Ku West, Sol Hoopii, Roy Smeck, Sol K. Bright etc., and Folklyric No. 9022, KALAMA'S QUARTETTE, Early Hawaiian Classics featuring Mike Hanapi on Steel. Records are \$8.98 each.

If you cannot obtain locally on special order (Best sources are small shops specializing in Blues and Folk records) you can order by mail from ARHOOLIE RECORDS, 1034 San Pablo Ave., El Cerrito, CA 94530. Postage and handling PER ORDER is \$3.00 in USA. Outside USA \$5.00 U.S. for first 5 items plus \$1.00 for each additional item.

ELDERLY INSTRUMENTS: Member Stan Werbin operates a company specializing in vintage musical instruments. For catalog write to: ELDERLY INSTRUMENTS, 1100 N. Washington, PO Box 14210, Lansing, Michigan 48901.

MUSIC NOTE TIME VALUES:

WHOLE NOTE = 4 BEATS or COUNTS OF TIME

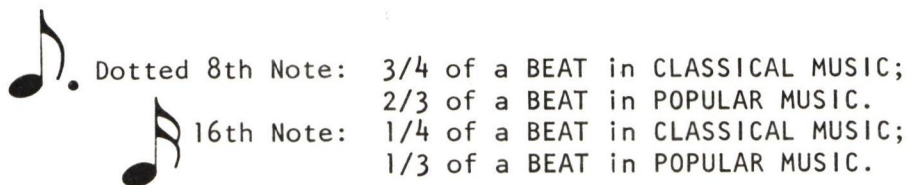
HALF NOTE = 2 BEATS

DOTTED HALF NOTE = 3 BEATS

QUARTER NOTE = 1 BEAT

EIGHTH NOTE = HALF OF ONE BEAT

TRIPLET = ONE THIRD OF ONE BEAT EACH
PLAYED THREE TO ONE BEAT



Dotted 8th Note: $\frac{3}{4}$ of a BEAT in CLASSICAL MUSIC;
 $\frac{2}{3}$ of a BEAT in POPULAR MUSIC.

16th Note: $\frac{1}{4}$ of a BEAT in CLASSICAL MUSIC;
 $\frac{1}{3}$ of a BEAT in POPULAR MUSIC.

DOTTED EIGHTHS AND SIXTEENTHS:
IN SLOW AND MEDIUM TEMPO POPULAR
MUSIC ARE PLAYED IN A TWO THIRDS
OF A BEAT AND ONE THIRD OF A BEAT
PATTERN. THE SAME PATTERN FOR
EIGHTH NOTES ALSO.



MULTIPLE MEMBERSHIP IN STEEL GUITAR CLUBS: Should you belong to more than one Club? Why not if you wish and their newsletters and other activities are of interest to you. We are exchanging newsletters with other organizations and will maintain cooperative and friendly relations with them. This hopefully will be of mutual benefit to all of us.

The musical orientation of Clubs will tend towards Country Music or Hawaiian or a combination of both. Those who join our Association obviously have a strong interest in Hawaiian music whether they play six or sixty strings with pedals or no pedals. We want to encourage the coming generations of pedal steelers to love and play some Hawaiian. If we do not do this our Hawaiian music from the Golden Era of Hawaiian Entertainment may eventually disappear.

Our Association is dedicated to the promotion and preservation of Hawaiian popular music and all forms of the Steel Guitar. Few of us will ever master the sounds and styles of the great Hawaiians so we can but try and encourage others. Please see THE HAWAIIAN MYSTIQUE in this issue.

MEMBERSHIP GROWTH: Every member try to recruit another member: this approach has been quite successful for us. A list of members who have obtained new members or given gift memberships follows:

Texas member Everett Wicker is the first member to renew for the membership year beginning on July 1, 1986 thru June 30, 1987 (TEXANS TEND TO THINK TALL!); John Marsden, "Red" Moser, Art Ruymar, Herbert Jung, Floyd Normandy, Billy Reid, John DeBoe, E. L. Prouty, Jerry Alcock, W. E. Thompson and Jimmy Hawton. (Please forgive me if I missed anyone.)

LAST BUT NOT LEAST: Our Champion Recruiter is Jerry Byrd who made his personal mailing lists available to us along with several gift memberships. He also hands out our promotional brochures to his fans in Honolulu with excellent results. THANKS AGAIN to our GENEROUS DONORS whose confidence and financial support is sincerely appreciated by the Association Founders.

TUNINGS ON RECORD JACKETS: Del Hostetler, Alexandria, Virginia suggests that steel recording artists provide information on their tunings keyed to the songs on the record albums. This would certainly be very helpful to players trying to perfect their playing skills.

WANTED - BUY - SELL - EXCHANGE: This section is for members who want to buy, sell, swap or whatever, strictly between the individuals concerned. Just send us the specific information for publication. The Association cannot assume any responsibility for these transactions.

Herby Wallace, 2007 Skyline Drive, Chattanooga, TN 37421 (Tel. 615-894-3087) is selling a collection of over 60 vintage steel guitars. List available.

W. E. Thompson, McMillan Road-Site E, RR #2, Nanaimo, B.C., Canada V9R 5K2 is looking for El3th tuning music.

C. R. Payne, 45 Duncairn Crescent, Hamilton, Ontario, Canada L9C 6E8 wants to buy a 6 or 8 string Rickenbacker electric lap steel (not a frypan). He also wants to exchange HAVE and WANT LISTS of Hawaiian music cassettes and LPs.

George Berick, 286 Forest Hill, Youngstown, Ohio 44515 (Tel. 216-792-3447) has a white Oahu 6 string lap steel and a National amp for sale.

Verna Joel, 423 N. Main, New Ulm, MN 56073 has a silver National Hawaiian resonator guitar Model #97, serial #C-4404, surf rider on back, for sale.

Michael Lee Allen, PO Box 17001, Tower Station, Fresno, CA 93744 (Tel. 209-227-7525) has a two page list of vintage guitars for sale.

Earl Hepner, 300 Coal St., Port Carbon, PA 17965 wants to sell his Alkire Eharp for \$250.00 (He also has most of the Eharp music.) Earl has about 20 lap steels in his collection that are for sale. Write to him for his list.

Fred Barnett 44-749 Malulani, Kaneohe, Hawaii 96744 (our Staff Cartoonist) has two items for sale: A Dobro #33 Hawaiian Style, brass body with palm tree etchings and built-in pick-up. Great condition with case for \$350.00 (sells for \$800.00 new). Write or phone 808-247-3068. His record: Wiki Waki Woo label "On Okie Dokie Bay" (Hoku Award Nominee), a collection of fun titles and Steel Guitar Romance from Hawaii! ("Wearin' em Higher in Hawaiiiah", etc.) \$8.00 postpaid in USA or \$10.00 U.S. outside of USA.

NEW MUSIC INDUSTRY MEMBER: Don E. Christensen of SIERRA INSTRUMENT COMPANY, PO BOX 66289, PORTLAND, OR 97266 (located at 5629 SE 111th Ave., Tel. No. (503) 761-9632) manufacturers of Sierra pedal steels. Write for catalog.

EXCEL LAP STEELS: Bob Waits, EXCEL PEDAL STEEL GUITARS, Box 15, Cheney, WA 99004, Tel. No. (509) 235-8297 offers two Jerry Byrd endorsed models: 8 String Fry PAN Lap Steel; 8 String Double Neck J. B. Model; choice of 22 or 24 inch scale lengths, \$725.00 and \$1495.00. Write for details.

MEMBERSHIP ADDRESS LISTS: Please see page 6 of Newsletter No. 1 (Jan 86). The enclosed MEMBERSHIP RENEWAL FORMS request your permission to publish your address and phone number for distribution to members only.

HAWAIIAN MUSIC - HISTORICAL VIEWPOINTS: Continued from page 7, Newsletter No. 1 (Jan 86). Early Hawaiian popular or folk music was essentially vocal, four part choral group singing with a Hymn-like style, very beautiful music. As the steel guitar evolved a variety of instrumental (no words) music solos were composed and performed by steel players.

Circa 1915 popular music in the mainland style came into vogue: "On The Beach At Waikiki," "Song Of The Islands," etc. Hawaiian composers produced many songs in this popular song format. Mainland composers jumped into the fray with both feet. Critics often put these songs down as "Hapa Haole" music or not really Hawaiian. Even such famous and successful musical show composers as Jerome Kern got into the act with "Kalua." Do you remember "Drifting and Dreaming," "Don't Sing Aloha When I Go"?

While many thousands of popular songs, of all types were published, only a few hundred survive as "standards." Probably a thousand or so of these songs were Hawaiian of which a hundred or less are still played or remembered. But in their day these songs, together with the steel guitar, were Hawaiian Music to the World. Again I say those who did not live and love it in the thirties and forties and earlier can never really understand. Would that they had sufficient common sense to realize this. Many of those who write about music and cultural subjects are often classically oriented and thus have great difficulty in finding merit in any form of popular music. (To Be Continued.)

THE HAWAIIAN MYSTIQUE: In a recent talk tape Jerry Byrd expressed the view that probably only the original Hawaiians ever reached the ultimate level of Hawaiian Style musical expression on the Steel Guitar. He stated that as hard as he tries to obtain the true Hawaiian tone and expression his Country background takes over now and then. So if you play other music such as standards from the Big Band Era, Jazz or Country your playing of Hawaiian songs may well be influenced by your other interests.

This jogged my thought processes about how we play today and how they played back in the good old days. The early Hawaiian Steelers obtained amazingly beautiful tone quality from the early six string acoustic and resonator guitars. When the Electric Guitar came on the scene in the thirties they still preferred six strings and simple tunings: High Bass A Major, E Seventh, C# Minor, A Seventh. Their playing was essentially single note melody with third and sixth intervals (two part harmony) and some triads (three part harmony) and now and then a strum chord (4, 5 or 6 strings).

Much of their playing was on the first three plain wire strings with slant steel technique and slides which produced a smooth, connected, flowing or Legato style of music. When combined with seemingly effortless Vibrato steel bar technique we have the basic ingredients of Hawaiian Style. The emphasis was Melodic rather than Chordal since the role of the Steel was to play the tune as the principal instrumental voice in small groups.

As the instrument evolved physically to meet the demands of players who wanted more chords, we entered the era of 7 and 8 string guitars and double, triple and quad neck console guitars with supporting legs and a variety of more complex chordal tunings. From there we went on to the Pedal steel concept employing foot pedals and knee levers to change string pitch and tunings as you are playing. In addition to obtaining greater chord harmony a significant objective was to reduce or eliminate Slant Steel Technique. Yet slant bar work is essential to Hawaiian Style which is why many Pedal Steelers carry around a Lap Steel for their Hawaiian songs. Slant steel work has always presented a serious intonation or playing in tune (correct pitch) problem for many players. My conclusion is that while we tend to associate Hawaiian with basic tunings and instruments and less complex playing styles this does not mean you cannot play Hawaiian style effectively on pedal steels. It is a matter of individual playing skill, arranging, interpretation and feeling for Hawaiian.

Counting Time

TIME is counted in a STEADY EVEN MANNER with a FEELING OF RHYTHM. Pick notes RIGHT ON THE BEAT. Each beat should last the same amount of time. Examples of time counting are shown below.

O

COUNT:

1	2	3	4
---	---	---	---



COUNT:

1	2	3	4
---	---	---	---



COUNT:

1	2	3	4
---	---	---	---



COUNT:

1	2	3	4
---	---	---	---

Playing in TIME

with a strong RHYTHMIC BEAT

is essential to becoming a

GOOD MUSICIAN.

DO NOT NEGLECT your


TIME COUNTING during

DAILY PRACTICE SESSIONS.

NON-ENGLISH CORRESPONDENCE: Today I received a letter in GERMAN from a new member. Now my ENGLISH is fair, my FRENCH passable but the GERMAN I have not. To obtain a translation would consume the better part of a day as I would have to drive about 10 miles to the University where hopefully a student or instructor would translate for me. But the real problem is where to PARK the old clunker. Open warfare on parking exists between the students, the University administration, the surrounding business people and neighborhoods, campus police, etc. A visiting taxpayer is at great risk.


PLAYING EIGHTH NOTES: Fast moving eighth notes sound more rhythmic when played with ALTERNATING THUMB AND FIRST FINGER PICKING. The time counting is: 1+, 2+, 3+, 4+, etc. Each note is worth ONE HALF OF ONE BEAT or TWO EIGHTH NOTES TO EACH BEAT OF TIME.



QUARTER NOTES: 

COUNT:

1	2	3	4
---	---	---	---

EIGHTH NOTES: 

COUNT:

1	+	2	+	3	+	4	+
---	---	---	---	---	---	---	---

PLAYING TRIPLETS: Each EIGHTH NOTE in a triplet is worth ONE THIRD OF ONE BEAT or THREE EIGHTH NOTES TO BE PLAYED IN THE TIME SPACE OF ONE BEAT OF TIME. The picking pattern is THUMB, FIRST FINGER, SECOND FINGER. TIME COUNT IS: 1+a, 2+a, 3+a, 4+a, etc.



THE PEDAL STEEL NEWSLETTER: The Pedal Steel Guitar Association, Box 248, Floral Park, NY 11001 publishes their newsletter ten times each year. Dues are \$15.00 U.S. for the USA and Canada; \$24.00 U.S. for Overseas. Write for membership application.

CONVENTION IN ST. LOUIS: Tentatively scheduled at the CLARION HOTEL in St. Louis, Missouri on August 24, 25, 26, 27, 1986 (Sunday thru Wednesday) prior to Scotty's Steel Guitar International Convention. Those who wish to stay on for the SGI affair can do so. FINAL DETAILS ON PRE-REGISTRATION AND HOTEL RESERVATIONS IN THE JULY 1986 NEWSLETTER.

UNITED GUITARISTS ASSOCIATES: This article is designed to inform you of a new and revolutionary development in steel guitar playing. Regardless of your skill or experience, tunings, the type of music you are interested in or desire to play, with this method, you can vastly increase your speed and play full five-note chords with much greater accuracy. This new technique is a "Five-Finger Method," which utilizes the four bare fingers with a pick worn on the thumb only. It was developed by a university-trained musician who is active with orchestra, combo, stage, and studio assignments. It involves a systematic development of the small muscles of the fingers, thumb, and most importantly - those of the ring and small fingers. All digits are fully utilized in such manner as to abolish wasted motion. Video has been employed to recognise and correct unnecessary movements of the fingers, hand, and arm. Full five-note accompaniment is also possible (as with the piano) because all fingers contact the strings simultaneously.

The method is taught using specialized tunings, however, any tuning can be used with the same results: greater speed, increased accuracy, and development of an expanded harmonic facility; as many pedals as desired can be used. Traditional and modern harmonic theory, relevant to steel guitar playing, are taught concomitantly. A through-the-mail course is available for study, and consists of modules which are made into two study sessions (one per week); when the first module is completed, another is sent. The cost of each module is \$15.95, and some contain tapes. This is not available in book form, nor in music stores. If you are seriously interested in steel guitar and desire to go forward with what you already know, send for the first module and enclose a brief profile of your steel guitar experience for our files. Address: HUGH JEFFREYS, President, United Guitar Associates, Box 1249, Memphis TN 38101 (Tel. No. (601) 342-1065).

STRINGS FOR STEEL GUITAR: ERNIE BALL plain and wound electric guitar strings are available from many music stores. String diameters are listed below in thousandths of an inch. They are sold on an individual basis so you can make up sets for your particular tuning system. Two Pedal Steel 10 string sets are offered: No. 2501, C6 Set, \$12.95; No. 2502, E9 Set, \$11.00.

PLAIN

	1008 .70 008
	1009009
	1010010
	1011011
	1012012
	1013 .80 013
	1014014
	1015015
	1016016
	1017017
	1018 .90 018
	1020 PLAIN 020
	1022 PLAIN 022
	1024 PLAIN 024

NICKEL WOUND

	1118 1.30 018
	1120020
	1122022
	1124024
	1126026
	1128028
	1130 1.45 030
	1132032
	1134034
	1136036
	1138038
	1140 1.55 040
	1142042
	1144044
	1146046
	1148048
	1150 1.75 050
	1152052
	1154054
	1156056
	1158058

ERNIE
BALL

NICKEL PEDAL STEEL BASS STRINGS

ORDERS OK DIVISIBLE BY 3

	1160 2.25 060
	1162062
	1164064
	1166066
	1168068
	1170070
	1172072
	1174074